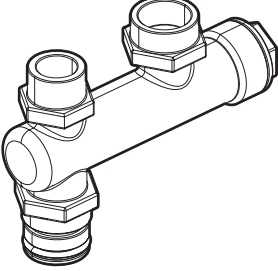




Read this guide thoroughly before installing the product.
The exterior of the product and specifications may be changed without prior notice for quality improvement.
The illustrations in this guide may not be identical to the product you have purchased.
Keep this guide in a handy place for future reference.

Included items:

		
PRV-Air vent Adapter	Socket (Thread to clip)	Clip

Installing

Using this adapter, you can easily install the pressure relief valve, air vent and external LWCO.

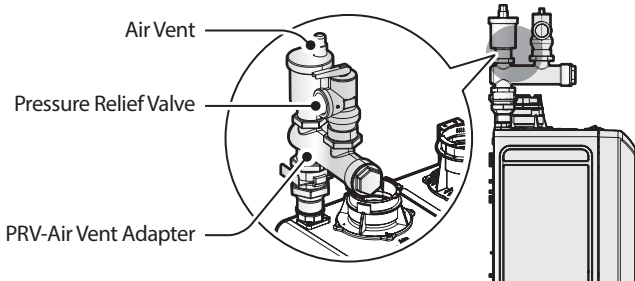


Figure 1. Adapter and Components Assembly

Install a separate LWCO device if required by local codes. The following figure illustrates an example of typical external LWCO installation.

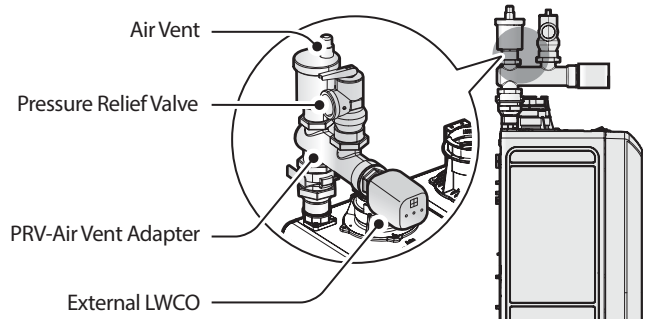


Figure 2. Adapter and Components Assembly (with LWCO)

Follow the guidelines below when installing a PRV-Air vent adapter.

1. Connect the socket to boiler PRV Connection.
2. Insert PRV-Air vent adapter into the socket.
3. Install the provided clip to secure the adapter to the fitting.

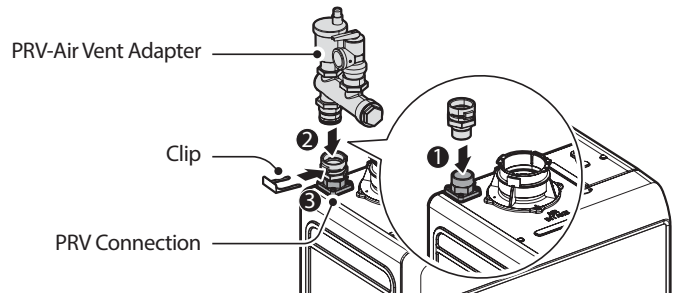


Figure 3. Adapter assembly